

acaia



**Acaia Orion  
User Manual**

**V 1.13.34**

# Contents

<b>3</b>	<b>Introduction</b>
3	Features
3	Interface Overview
<b>4</b>	<b>Getting Started</b>
4	Initial Setup
4	Getting Started
4	General Operation
<b>5</b>	<b>Product Care Information</b>
5	Battery charge
5	Calibration
<b>6</b>	<b>Operations</b>
6	Basic Operations
6	Set Preset Weight
6	Switch Mode
6	Empty Hopper
<b>7</b>	<b>Mode Introduction</b>
7	Mode 1 - Manual Dosing Mode
8	Mode 2 - Auto Dosing Mode
9	Mode 3 - Weighing Mode
<b>10</b>	<b>Settings</b>
10	Accessing the Orion's Settings
10	Diagram of the Settings Menu
<b>12</b>	<b>Appendix</b>
12	Buttons
12	LED indicators
13	Error codes
13	Other
<b>14</b>	<b>Specifications</b>

# Introduction

---

## Features

The Orion Bean Doser™ is designed for dosing green beans or roasted coffee beans based on weight.

### Fast Weight-Based On-Demand Dosing

The Orion Bean Doser™ can dose 225 grams (1/2 lbs) in 12 seconds and 20 grams in 3 seconds within the error margin of 2-3 beans.

### Full Automatic Mode

Designed with a fully automatic mode for continuous dosing of multiple containers without pressing any buttons.

### Intuitive Dial Interface

A new dial interface with three preset modes for storing different target weights and allowing easy access by rotating the dial for different functions.

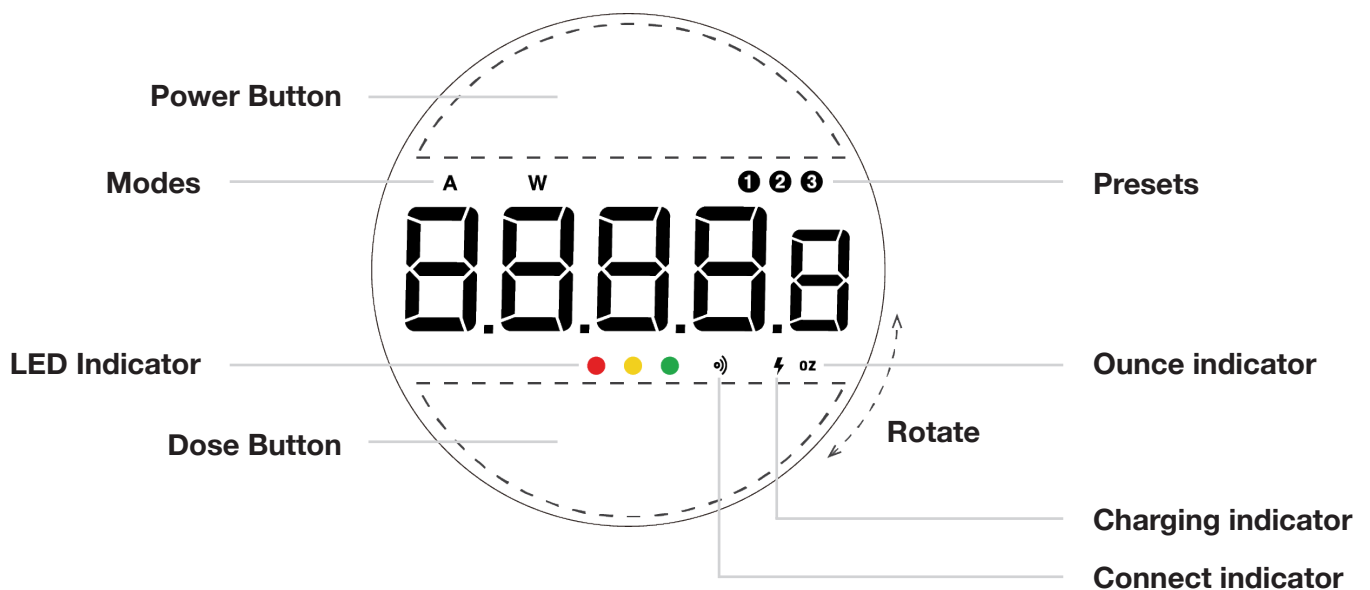
### Weighing Scale Mode

The Orion Bean Doser™ can function as a smart industrial weighing scale with a capacity of up to 3000 grams.

### Statistic Tracking System

The Orion Bean Doser™ can track statistical information such as total number of doses or total weight of the dosing session.

## Interface overview



# Getting Started

---

## Initial Setup

1. Prior to using your Orion for the first time you should rinse and clean the bean hopper in warm soapy water. Dry immediately after cleaning.
2. Attach the bean hopper on top.
3. Place a container on the weighing platform to avoid accidental dispensing.
4. Connect the power cord to the Orion.
5. Place coffee beans into the hopper.

## Getting Started

1. Make sure that the weighing platform is clean.
2. Turn on the Orion by pressing Power and place the container on the platform.
3. Set target weight by short pressing Power. Adjust values with Dial then short press Power to confirm.
4. Press Dose to start dosing. If the display shows [ CUP ] [ rESEt ], please place a container on the platform.
5. When a dose is complete, press Power to return to dosing.

## General Operation

The Orion is designed for dosing portions of beans from 5 grams to a maximum of 3000 grams per dose with an accuracy of  $\pm 2$  beans ( $\sim 0.5$  g).

There are two dosing modes in the Orion — Manual mode and Auto mode. To choose between modes, long press the Power button and the display will show the current mode of operation. Rotate the dial to switch modes.

To take full advantage of the Orion Mini's many features, carefully read through the entire manual, which contains step-by-step procedures, examples, and other information.

Warning: Incorrect handling of this product could result in personal injury or physical damage.

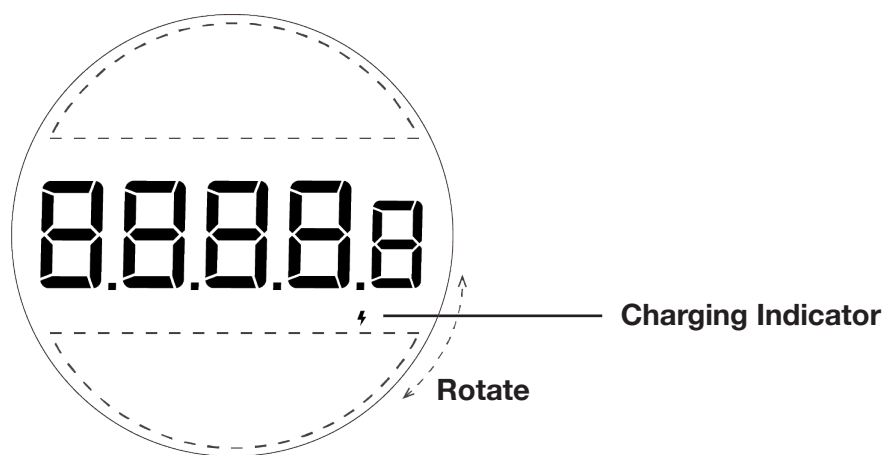
# Product Care Information

---

## Battery charge

The Charging indicator will display when the battery is charging and will turn off when the charger is removed. If the USB cable is not working, the indicator does not appear.

Please note that the Orion ONLY charges on the AC-DC adapter included in the package. It does NOT charge with any other USB-C charger.



## Calibration

1. While the Orion is in Weighing Mode and the weighing unit is in grams, rapidly press the Dose button multiple times until the LED display shows [ CAL ] and then [ 500 ].
2. Place a 500-gram calibration weight on the platform and wait for the Doser to execute the calibration procedure.
3. The display shows [ End ] when the calibration procedure is completed.

\* Note: Calibration weights of 100 g, 1000 g, 1500 g, 2000 g, and 3000 g can also be used. For highest accuracy use Acaia calibration weights or F1 or F2 Class calibration weights. Inexpensive lower-class calibration weights have a higher deviation from a true accurate weight.

# Operations

---

## Basic Operations

Action	Operation
Turn On Scale	Short press <b>Power</b>
Turn Off Scale	Double press <b>Power</b>
Toggle Presets	Rotate <b>Dial</b>
Set Preset Weight	Short press <b>Power</b> , rotate <b>Dial</b> , then short press <b>Power/Dose</b>
Switch Mode	Long press <b>Power</b> , rotate <b>Dial</b> , then short press <b>Power/Dose</b>
Start Dosing	Short press <b>Dose</b>
Reset Mode	Short press <b>Power</b>
Empty Hopper	Long press <b>Dose</b>
Stop Emptying Hopper	Short press <b>Dose</b>

In the main display menu, you may use the controls above to choose between presets, enter different dosing modes, or start dosing with the current mode.

## Set Preset Weight

Action	Operation
Enter Preset Weight Setting	Short press <b>Power</b>
Change Value	Rotate <b>Dial</b>
Save Preset Value	Short press <b>Power/Dose</b>

There are 3 presets in the Orion for storing desired weights. For example, you can set preset 1 at 18 g for dosing, preset 2 at 20 g, and preset 3 at 35 g. You may adjust the preset value with the controls above.

## Switch Mode

Action	Operation
Enter Mode Setting	Long press <b>Power</b>
Switch Mode	Rotate <b>Dial</b>
Set Mode	Short press <b>Power/Dose</b>

There are 2 different modes in the Orion for operation — Manual dosing mode and Auto dosing mode. You may set different modes using the controls above.

## Empty Hopper

Action	Operation
Empty Hopper	Long press <b>Dose</b>
Stop Emptying	Short press <b>Dose</b>
Back to Preset	Short press <b>Power</b>

To empty the bean hopper, you can long press the **Dose button**. The Orion will continuously dispense the beans until you press the **Dose button** again to stop. Make sure you place a large container on the platform for this operation.

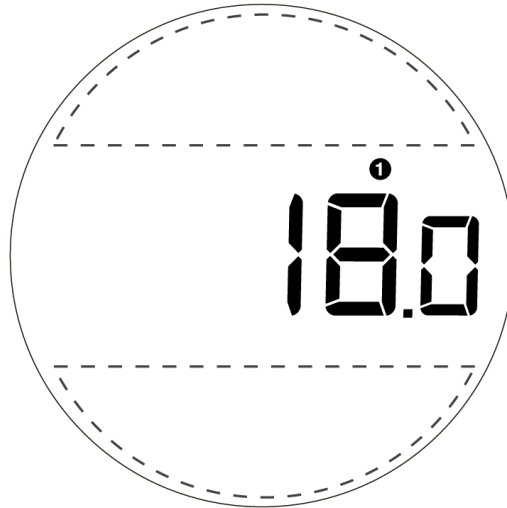
There will be an 'E' indicator on the top left corner of the display when emptying the hopper.

# Mode Introduction

---

## Mode 1 - Manual Dosing Mode

This is the default mode for dosing.



Action	Operation
Start Dosing	Short press <b>Dose</b>
Stop Dosing	Short press <b>Dose</b>
Pulse Beans	Short press <b>Dose</b>
Reset Mode	Short press <b>Power</b>

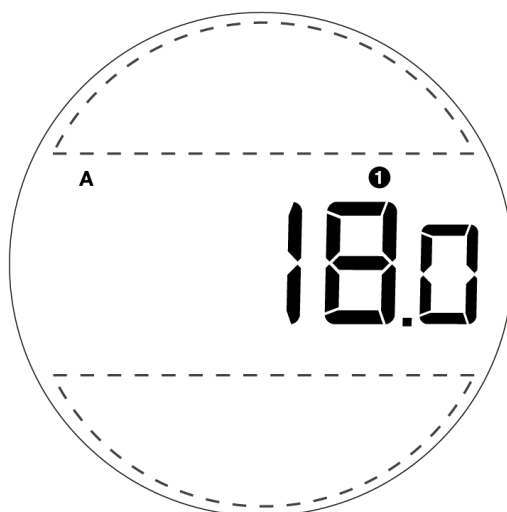
1. Select a preset by rotating the **Dial**. Adjust the preset value by short pressing **Power** and rotating the **Dial**. Short press **Power** to confirm.
2. Press **Dose**, and the Orion will begin dosing until desired weight is reached within +/- 0.5 g (solid green LED will display to indicate an accurate dose).
3. At the end of dosing, you may press **Dose** several times to 'pulse'. Pulse will slowly add a few more beans if needed.
4. Press **Power** to start a new dose.
  - Manual dosing mode can dose on demand with a selected preset.
  - A [ **NOI SE** ] message will show when a container is removed from the Orion or when the platform is touched during dosing. Please dose again.

### Pulse in Manual dosing mode

The Orion has a pulse function that adds a few beans to the dose manually at the end of each dose. To pulse (add) a few more beans at the end of each dose, simply press the **Dose** button and the Orion will add a small amount of beans with each press. If one press doesn't drop any beans, you can press it multiple times until the desired weight is reached.

## Mode 2 - Auto Dosing Mode

Auto dosing mode can dose automatically whenever a container is placed on the platform. There will be an 'A' indicator on the top left corner of the display when in Auto mode.



At the end of auto dosing, you may short press the **Dose** button to 'pulse' a few more coffee beans if required. A [ rEADY ] message will show on the display when auto dosing mode is in action. To leave the [ rEADY ] display, short press the **Power** button. You will be able to return to the preset selection display.

Action	Operation
Enter Ready State	Short press <b>Dose</b>
Start Dosing	Short press <b>Dose</b>
Stop Dosing	Short press <b>Dose</b>
Pulse Beans	Short press <b>Dose</b>
Reset Mode	Short press <b>Power</b>

Display	Description
rEADY	Place container on the platform; dosing will start when weight is detected

1. Switch into automatic dosing mode by long pressing **Power** and selecting the Auto mode with the **Dial**. Press **Power** again to confirm the mode.
  2. Select or adjust a preset weight.
  3. Press **Dose** to start automatic dosing, the display will show [ rEADY ].
  4. To start the first dose, press **Dose** again and the automatic dosing will begin.
  5. Remove the completed dose, and wait for the display to show [ rEADY ] again.
  6. Place another container on top of the platform and dispensing will start again.
  7. Press **Power** to set a different dose and leave the current auto dosing session.
- Auto dosing mode can dose automatically whenever a container is placed on the platform.
  - There will be an 'A' indicator on the top left corner of the display when in Auto mode.
  - A [ NO ISE ] message will show when a container is removed from the Orion or the platform is touched during dosing. Please dose again.

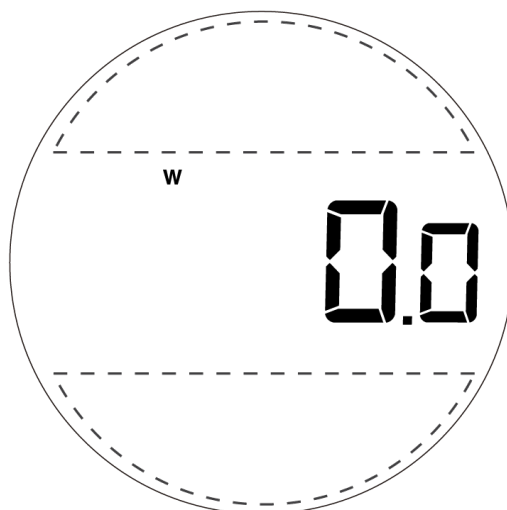
### Pulse in Auto dosing mode

The pulse function also works in the auto dosing mode. To pulse (or add) a few more beans at the end of each dose, simply press the **Dose** button and the Orion will add a small amount of beans with each press. If one press does not dispense any beans, you can press it multiple times until the desired weight is reached.



## Mode 3 - Weighing Mode

The weighing mode is the Orion's smart scale mode. It will function like an industrial weighing scale with a 3000-gram capacity. To switch to weighing mode, rotate the **Dial** until a 'W' indicator appears on the top left corner of the display.



Action	Operation
Reset Mode/Zero	Short press <b>Power</b>
Tare	Short press <b>Dose</b>

- The weight of the object on the platform will be shown on the display.
- The **Power** and **Dose** buttons will function as 'Zero' and 'Tare'.

# Settings

---

## Accessing the Orion's Settings

1. With Orion powered on, long press **Power** to enter the Settings mode. The display will show [ SEt ].
2. Press **Dose** to enter the Settings Menu. It will show the first setting for [ SPEEd ].

Action	Operation
Enter Setting Mode	Long press <b>Power</b>
Enter Setting Menu	Short press <b>Dose</b>

## Diagram of the Settings Menu

Setting	Display	Options	Default
Speed	SPEEd	FAST, PrEC, grEEEn	PrEC
Zero Tracking	t rAcE	05, 1 d, 2 d, 3 d, 4 d, 5 d, Off	1 d
Key Sound	bEEP	On, Off	On
Default Weighing Unit	Uni t	g, oz	g
Calibration	CAL	(Start calibration)	-
About	About	(Show the current Orion Firmware version)	-

## Dosing Speed [ SPEEd ]

You may adjust the dosing speed to prioritize either the accuracy or the speed of dosing. There are three speed settings available:

1. PrEC — Precision: Default speed, high accuracy. (default)
2. FASt — Fast: Faster speed, default accuracy (227 grams within 12 seconds); recommended for doses of 100 grams or more.
3. GrEEEn — Green Bean: Default speed for green beans or light roast beans.

To save your selection and exit the settings sub-menu, press **Dose**. [ SPEEd ] will display on the LED to confirm that the selected option has been saved.

## Zero Tracking Setting [ trAcE ]

Zero Tracking is a function to help compensate the weight readout fluctuations at zero point to improve the usability of the scale. The Acaia Orion is allowed to compensate fluctuations by up to 2 d according to industrial weighing guidelines.

1. Off: It is not recommended to turn off Zero Tracking; the zero indication can drift easily as the room temperature changes.
2. 0.5 d ~ 3 d: For example, since each division is 0.1 g, 3 d = 0.3 g. When Zero Tracking is set to be 3 d, any initial weight between  $\pm 0.3$  g on the weighing pan will be zeroed out.
3. 2 d is recommended in general for the Orion.

To save your selection and exit the settings sub-menu, press **Dose**. [ trAcE ] will display on the LED to confirm that the selected option has been saved.

## Key Sound Setting [ bEEP ]

1. Set the Key Sound function to Off/On to turn off/turn on the beeping sound.

To save your selection and exit the settings sub-menu, press **Dose**. [ bEEP ] will display on the LED to confirm that the selected option has been saved.

## Default Weighing Unit [ Uni t ]

1. The Default Weighing Unit is set to grams if [ 9 ] is selected and ounce if [ o2 ] is selected.
2. Rotate **Dial** to switch the Default Weighing Unit between grams and ounces.

To save your selection and exit the settings sub-menu, press **Dose**. [ Uni t ] will display on the LED to confirm that the selected option has been saved.

## Calibration [ CAL ]

Please go to **Page 5: Calibration** for more information.

## About [ About ]

Shows the current Orion Firmware version.

To update to the latest version, please use Orion Updater on [www.acaia.co/pages/apps](http://www.acaia.co/pages/apps).

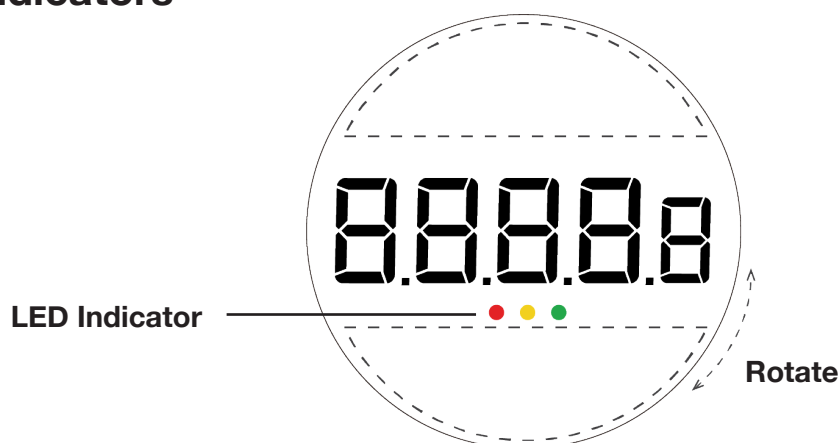
# Appendix

## Buttons

Button	Function	Example
<b>Power Button</b>	Turn On	Short press to turn on the Orion
	Turn Off	Double press to turn off the Orion
	Set/Save Preset Weight	Short press to set/save preset weight
	Set Modes	Long press to switch to Manual/Auto Mode
	Save the Setting and Return to Menu	Short press to save the Setting and go back to Menu
<b>Dose Button</b>	Start Dosing	Short press to start dosing when in Manual/Auto mode
	Empty Hopper	Long press for 5 seconds to empty the hopper
	Stop Emptying Hopper	Short press to stop emptying the hopper
	Save the Setting and Return to Menu	Short press to save the Setting and go back to Menu
<b>Rotate Dial</b>	Toggle Presets/Modes	Rotate to toggle presets/modes
	Adjust Preset Weights	Rotate to adjust the preset weights

\* Please go to **Page 6: Operations** for more details.

## LED Indicators



### Green Light - Dosing progress indicator

When the green light is blinking, dosing is in progress. Once dosing is complete, the indicator will display a solid green light.



### Yellow Light - Dose warning indicator

When the yellow light is lit, it means that the current dose is at least 0.5 grams less or more than the target amount. You may want to add some beans with the pulse function or remove some.

### Red Light - System message indicator

When the red light is displayed, there is a system error with the Orion. Restart the Orion. If the problem persists, please contact us at [support@acaia.co](mailto:support@acaia.co).

## Error Codes

Error Code	Description
<b>Error 100</b>	Code error
<b>Error 101</b>	EEPROM error
<b>Error 102</b>	AD read error
<b>Error 303</b>	Unable to make zero point because the initial weight exceeds the limit (250% of capacity).
	Over load: The weight is over the maximum capacity.
	Under load: The weight is under the minimum capacity.
<b>Error 304</b>	Please calibrate the Doser in a stable environment free of vibration, wind, etc.
<b>Error 802</b>	Unable to tare because the weight exceeds the tare range.
<b>Error 803</b>	Unable to tare due to unstable weight.
<b>Error 904</b>	Password error (the default password is 0000).

## Other

Display Code	Description
UPdAtE	The Orion is in Update mode. Note: If you want to exit update mode, the Orion will automatically turn off and exit update mode after 1 minute and 30 seconds of no use.

# Specifications

---

<b>Model</b>	AO101 / AO102
<b>Product Weight</b>	3070 g ± 10 g
<b>Product Dimensions</b>	W: 332 mm L: 202 mm H: 368 mm
<b>Maximum Capacity</b>	3000 g / 105.82 oz
<b>Minimum Weight</b>	0.1 g
<b>Measuring Units</b>	g / oz
<b>Readability</b>	0.1 g
<b>Repeatability</b>	0.1 g
<b>Linearity</b>	1 d / 2 d / 4 d (d = 0.1 g)
<b>Indication Limit</b>	3090 g / 108.99 oz
<b>Power Supply</b>	12 Vdc / 1.5 A
<b>Battery</b>	Lithium-ion rechargeable 7.4 V 2600 mAh
<b>Battery Life</b>	Up to 48 hours
<b>Display</b>	LED
<b>Material</b>	Aluminum, Acrylic
<b>Connectivity</b>	Bluetooth 4.0
<b>Warranty</b>	1 Year
<b>Inside the Package</b>	Acaia Orion Bean Doser (Space Gray / Matte White) x 1 Hopper with capacity for 350~400 g of beans x 1 Power Adapter x 1

## **Copyright**

**This User Manual is protected by copyright. All rights reserved. No part of the manual may be reproduced, processed, duplicated or published in any form by photocopying, microfilming, reprinting or any other method, in particular electronic means, without the written agreement of Acaia.**

**© Acaia, California, 2020.**