

acaia



Acaia Ion Beam User Manual

AIM001 / AIM002

Contents

3 Introduction

3 Features

4 In The Box

4 Ion Beam Overview

5 Safety Information

6 Product Care Information

6 Battery Change

6 Battery Indicators

7 Using the Acaia Ion Beam

7 Using Acaia Ion Beam for the Orbit

7 Using Acaia Ion Beam with a tripod

8 General Information

8 Power On / Off

8 Usage

8 Area of Effect

8 Reset to Default

8 Enter the Ion Beam Firmware Update Mode

10 Specifications

Introduction

Welcome to your new Acaia Ion Beam.

Specifically designed to address the common issue of static electricity generated during the coffee grinding process, the Acaia Ion Beam features an industrial-grade ion generator that effectively minimizes static generated from grinding.

The static electricity is neutralized, reducing the retention of coffee grounds and minimizing flying chaff and clumps. The Ion Beam neutralizes either the positive or negative charges that build up during the grinding process, eliminating the static electricity that causes coffee grounds to cling together.

With the Acaia Ion Beam, you can expect a better coffee grinding experience, with less mess and more consistency.

Features

- Industrial-grade ion generator that generates concentrated high density negative or positive ions
- Works for light roasted coffee to dark roasted coffee
- Portable design to work with different coffee grinders.
- Reduces flying chaffs, clumps and retention for coffee preparation

In The Box

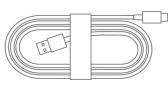
Thank you for choosing one of our products. First, check the shipping carton to find the following:



Acaia Ion Beam



L-Shape Mount



USB Type-C
Charging Cable



Spacer

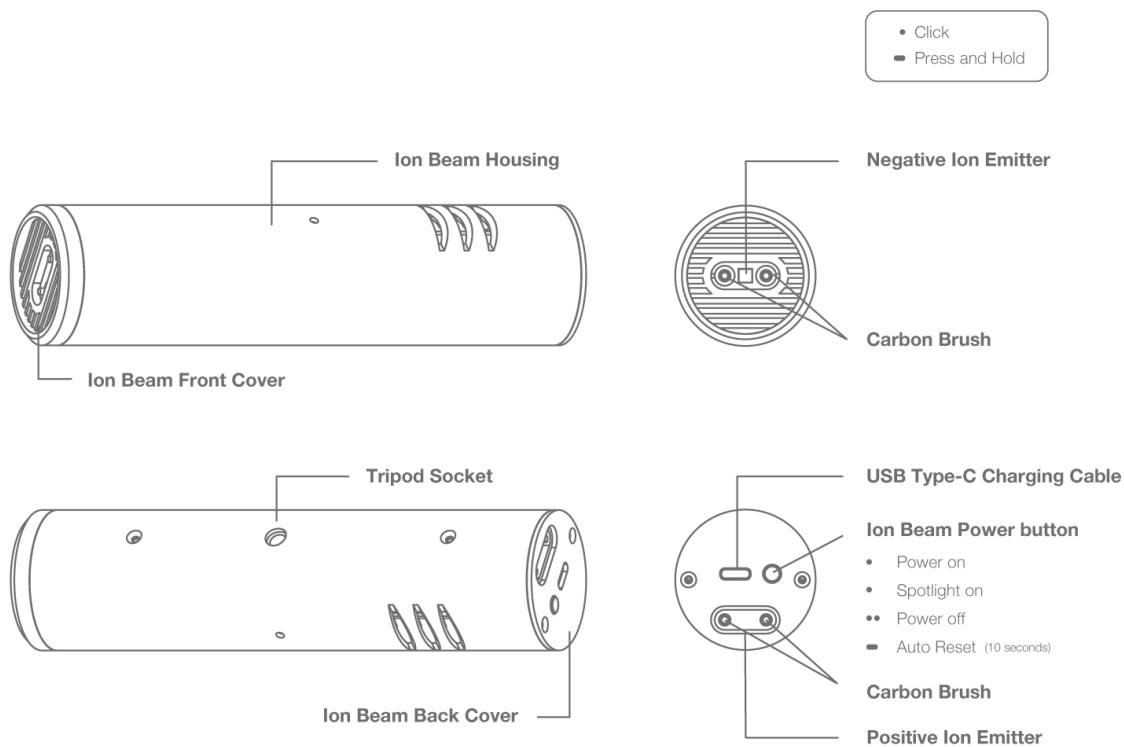


1/4-20x12 Thumb Screw



M3x12 mm Screw

Ion Beam Overview



Safety Information

Read the information below carefully before using your Ion Beam. Incorrect handling of this product could result in personal injury or equipment damage. Please keep this manual for future reference.

- ! Do NOT touch the carbon brush in the Ion Beam as it may have high voltage.
- ! Do NOT direct the Ion Beam and its light directly towards human eyes
- ! Do NOT immerse the Ion Beam in liquids or allow liquids to enter unit. Use a soft clean with warm water only to clean the product.
- ! Do NOT allow young children to play with this unit as it is not a toy.
- ! Do NOT use the unit if it is not working properly, has been dropped, damaged, or dropped into water.
- ! Never drop or insert objects into any openings.
- ! Do not try to disassemble the Ion Beam. Disassembling the unit may cause harm to yourself or damage the equipment, and will void the warranty.
- ! Do NOT operate where aerosol units are being used or where oxygen is being administered.
- ! Do NOT operate this unit in oxygen rich environments.
- ! Keep away from gas-powered stoves and ovens, and do not operate this unit in areas where amiable or combustible units or vapors may be present.
- ! When Ion Beam is turned on, Do NOT place it vertically on table for long period of time, as static may accumulate on the front or back of the Ion Beam.

Product Care Information

Battery Charge

You can charge the battery by plugging the USB Type-C cable into any of the power supplies listed below:

- A computer
- A USB wall-charger with an output of 5 volts and 1 amp
- A USB-C PD charger supporting 5 volts
- A DC car-charger with an output of 5 volts and 1 amp
- It takes about 1-2 hours to fully charge the battery when the battery is empty. Try not to let the battery completely run out before charging. Charge the battery as needed.
- A fully charged battery can work continuously for about 8 hours.

Battery Indicators

When the battery level is low, the LED flashes as low battery warning message.

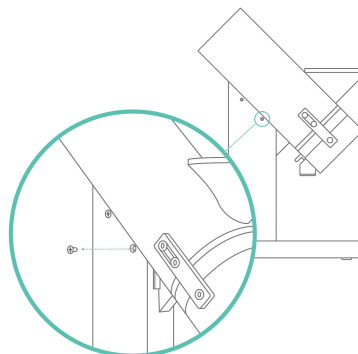
When the battery level is critically low, after the low battery warning appears, the device powers off automatically.

Note:

- **The Acaia Ion Beam is equipped with charging protection to prevent the battery from charging under high temperatures.**

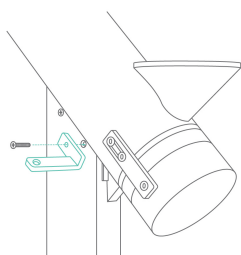
Using the Acaia Ion Beam

Using Acaia Ion Beam for the Orbit

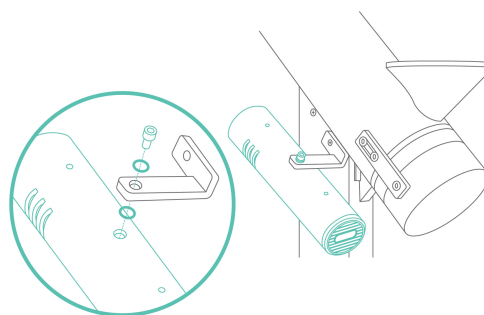


1 You will need L-shape mount x 1, Spacer x 2, 1/4-20x12 Thumb Screw x 1, M3x12 mm Screw x 1.

2 Remove the M3x8 mm screw on the left side of the motor housing of the Orbit.

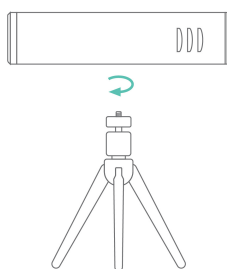


3 Align the short side of the L-shape mount with the Orbit and fix it in place with an M3x12 mm screw as shown. The long side of the mount should be perpendicular to the Orbit housing.

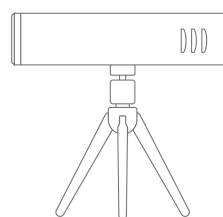


4 When installing the Ion Beam, place a spacer on both sides of the screw hole and tighten it with a 1/4–20x12 thumb screw. Once the Ion Beam is installed, position it at 45 degrees angle towards the chute.

Using Acaia Ion Beam with a Tripod



1 Place the tripod screw thread into the tripod socket on the Ion Beam housing.

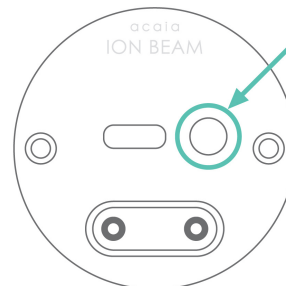


2 Rotate your tripod clockwise, until it connects to the Ion Beam housing. (A standard 1/4 inch tripod socket ensures universal compatibility)

General Information

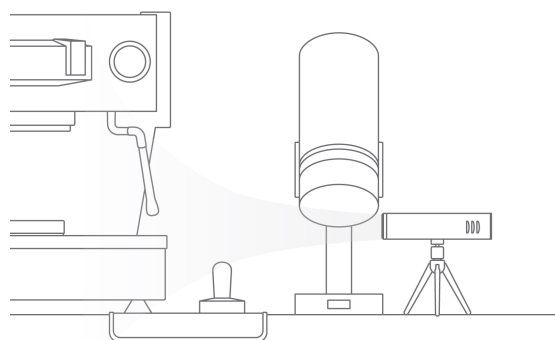
Power On / Off

- Click the switch at the bottom of the Ion Beam to turn on the ion beam. The indicator lights up.
- Click again to turn on the spotlight.
- To turn off the Ion Beam, click the switch at the bottom again. This will turn off the indicator and the spotlight.



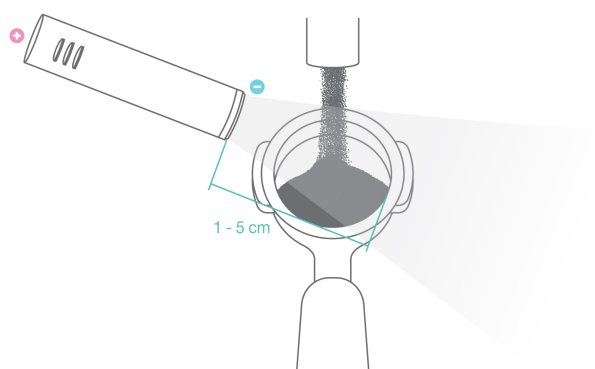
Usage

Place the Ion beam as close as possible to your grinder chute and turn on the Ion beam. It works best while shooting the ions from slightly above the exiting path of the grinder, and users may experiment with different grinders to find the optimal position for their specific setup.



Area of Effect

Depending on the environment, the Ion Beam is most effective when placed as close to the coffee grounds as possible. It usually works within 1-5 cm range.



Reset to Default

With the Ion Beam powered off, press and hold the switch for 10 seconds until the indicator blinks, release the switch to reset all settings to default.

Enter the Ion Beam Firmware Update Mode

To enter the update mode, please do the following:

- Press and hold the power switch for 10 seconds, the light will be displayed.
- Do not release the power switch. Press and hold for another 10 seconds, the light will start blinking. The Ion Beam is now in update mode.
- Once the connection is established, the light will stop blinking.
- Click Update on the Updater to start firmware update. The light will start blinking when update is in progress.
- Once the update is completed, the Ion Beam will turn off automatically.

Specifications

Model	AIM001/ AIM002
Product Weight	188.5 g ± 5 g
Product Dimensions	Ø: 42 mm L: 170 mm
Battery	Lithium-ion rechargeable 3.7 V 780 mAh
Battery Life	8 hours
Material	Aluminum, PC
Connectivity	Bluetooth 5.0
Warranty	1 Year
Inside the Package	Acaia Ion Beam x 1 L-Shape Mount x 1 USB Type-C Cable x 1

Copyright

This user manual is protected by copyright. All rights reserved. No part of this manual may be reproduced, processed, duplicated or published in any form by photocopying, microfilming, reprinting or any other method, in particular electronic means, without the written consent of Acaia.

© Acaia, California, 2023.